



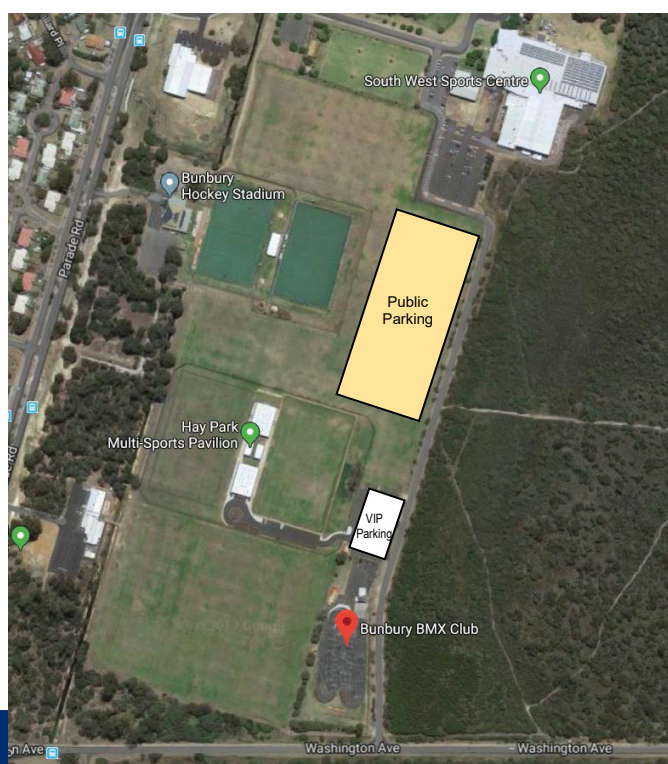
1. Registrations
2. Sprocket Party
3. Parking VIP/Expo/Officials
4. Team Pit Tents
5. State Team Tents
6. Staging
7. Public Spectator Space
8. Disabled Spectator Space
9. VIP Marquee
10. First Aid
11. Media/Administration
12. Toilets
13. Pro Shops
14. Event Village with big screen
15. Presentation Stage
16. Food Vendors
17. Bar
18. Spectator Marquees
19. Commentary
20. Scoring/Officials

- Rider access point
- Spectator access point



**BUNBURY SITE MAP**

**PARKING**



- The cost of public parking is \$2.00 per vehicle.
- Access to parking will be near the South West Sport Centre via Parade Road only.
- The Washington Ave end of Rotary Ave will be closed for the duration of the event.
- VIPs and Officials must display a car parking pass on the dashboard for admission to the VIP carpark.
- Marquee and equipment drop-off will be permitted in the Hay Park Sports Pavilion carpark on Monday and Tuesday only. This is for **drop-off purposes only**. Cars must park in the public parking area.
- Disabled parking will be available in the VIP car park.

